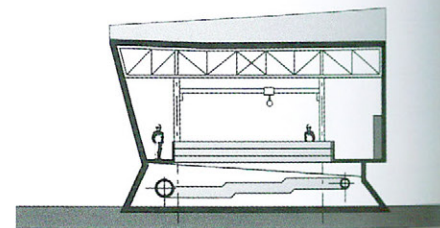
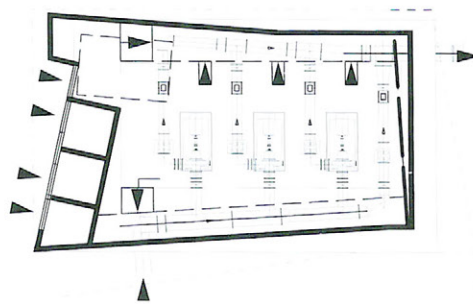
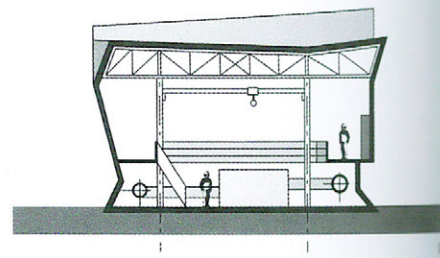
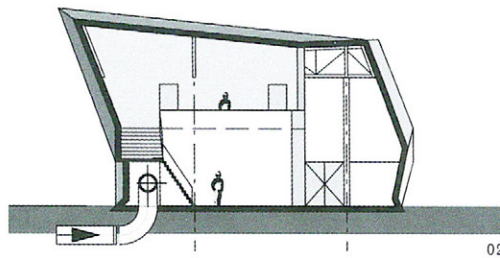


BOOSTER PUMP STATION EAST

The Booster pump station is a distinct sculpture that is located in a park-like setting surrounding the future yacht harbor. A concrete skin is molded around the functional elements of the building, whose crystal-like shape gives it an ever-changing appearance. The blue-green and marble pigmentation, the relief and texture treatments present the qualities of the concrete and result in a deep blue-green color. Small light fittings are placed in the cantilevers of the concrete to enlighten the base of the building with a diffuse blue light and make it glow at night.



01 Northeast elevation 02 Cross section 03 Cross section
04 Floorplan 05 Cross section 06 Surface 07 Southwest elevation

